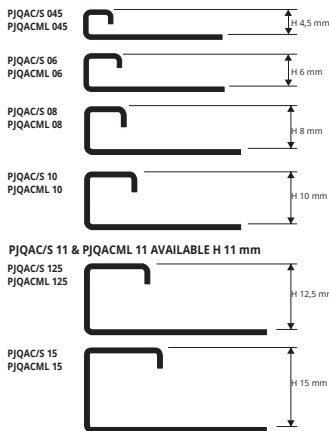


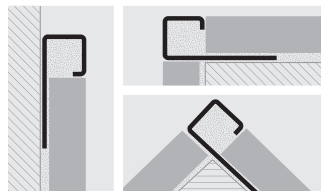
# PROJOLLY SQUARE

POLISHED, SUPER POLISHED AND SATIN FINISH STAINLESS STEEL AISI 304/1.4301-V2A

**PROJOLLY SQUARE** is a square corner bead profile in polished, super polished, satin finish stainless steel AISI 304/1.4301-V2A that can be applied on external corners of coverings. It can be used to close the perimeter of coverings, like a connection profile between step tread and riser of stairs coated with ceramic and natural stone tiles, and also as separation profile for floor and wall coverings. Its particular section, the availability in three different finishes and special pieces such as internal and external corners, end caps and joints make **PROJOLLY SQUARE** a much sought-after profile that allows a workmanlike application even in environments subject to high mechanical stresses.



## EXAMPLES AND INSTRUCTIONS FOR LAYING METHODS



1. Choose "PROJOLLY SQUARE" according to the tile thickness and desired finish.
2. Cut "PROJOLLY SQUARE" to the desired length and apply the adhesive on the support where the profile will be laid.
3. Press the anchoring flange of "PROJOLLY SQUARE" into the adhesive.
4. Lay the tiles, aligning them with the profile leaving a 2 mm joint. Remove immediately all remains of adhesive from the surface of the profile.
5. Fill the joints between the profile and the tiles with grout, in order to avoid water stagnation. Remove immediately all the remains of grout from the surface of the profile.



POLISHED STAINLESS STEEL AISI 304/1.4301-V2A with protective film bar length 2,7 lm - pack. 20 Pcs - 54 lm (H 4,5 - 108 lm) - 8/10 mm

Article	H mm
PJQAC 045	4,5
PJQAC 06	6
PJQAC 08	8
PJQAC 10	10
PJQAC 11	11
PJQAC 125	12,5
PJQAC 15	15

SUPER POLISHED STAINLESS STEEL AISI 304/1.4301-V2A thermo packed bar length 2,7 lm - pack. 20 Pcs - 54 lm - 8/10 mm

Article	H mm
PJQACML 045	4,5
PJQACML 06	6
PJQACML 08	8
PJQACML 10	10
PJQACML 11	11
PJQACML 125	12,5
PJQACML 15	15

SATIN FINISH STAINLESS ST. AISI 304/1.4301-V2A thermo packed bar length 2,7 lm - pack. 20 Pcs - 54 lm (H 4,5 - 108 lm) - 8/10 mm

Article	H mm
PJQACS 045	4,5
PJQACS 06	6
PJQACS 08	8
PJQACS 10	10
PJQACS 11	11
PJQACS 125	12,5
PJQACS 15	15

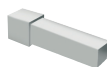
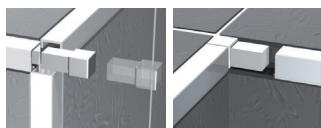
## COLOURS



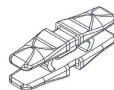
SUITABLE FOR USE IN CONTACT WITH FOODSTUFFS.

# CAPSULES, END CAPS and THREE-WAYS JOINTS

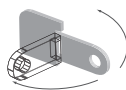
POLISHED, SUPER POLISHED AND SATIN FINISH STAINLESS STEEL AISI 304/1.4301-V2A / PLASTIC



CAPSULE  
CPJQAC 045-06-08-10-11-125-15/...  
CPJQACS/ML 045-06-08-10-11-125-15/...



JOINT  
GIJQ 045-06-08-10-11-125-15/...



END CAP  
TPJQACS 045-06-08-10-11-125-15/...

\* On demand, price and delivery time to be agreed.

CAPSULES AND END CAPS - SATIN FINISH STAINLESS ST. AISI 304/1.4301-V2A

Article	H mm
CPJQACS 045/...	4,5
CPJQACS 06/...	6
CPJQACS 08/...	8
CPJQACS 10/...	10
CPJQACS 11/...	11
CPJQACS 125/...	12,5
CPJQACS 15/...	15

Choose the desired packaging: E.g.: CPJQACS \_/10 (Pack. 10 Pcs)  
CPJQACS \_/2 (Pack. 2 Pcs)

## JOINTS - PLASTIC

Article	H mm
GIJQ 045/...	4,5
GIJQ 06/...	6
GIJQ 08/...	8
GIJQ 10/...	10
GIJQ 11/...	11
GIJQ 125/...	12,5
GIJQ 15/...	15

Choose the desired packaging: E.g.: GIJQ \_/10 (Pack. 10 Pcs)  
GIJQ \_/2 (Pack. 2 Pcs)

CAPSULES AND END CAPS - POLISHED STAINLESS STEEL AISI 304/1.4301-V2A

Article	H mm
CPJQAC 045/...	4,5
CPJQAC 06/...	6
CPJQAC 08/...	8
CPJQAC 10/...	10
CPJQAC 11/...	11
CPJQAC 125/...	12,5
CPJQAC 15/...	15

Choose the desired packaging: E.g.: CPJQAC \_/10 (Pack. 10 Pcs)  
CPJQAC \_/2 (Pack. 2 Pcs)

CAPSULES - SUPER POLISHED STAINLESS STEEL AISI 304/1.4301-V2A

Article	H mm
CPJQACML 045/...	4,5
CPJQACML 06/...	6
CPJQACML 08/...	8
CPJQACML 10/...	10
CPJQACML 11/...	11
CPJQACML 125/...	12,5
CPJQACML 15/...	15

Choose the desired packaging: E.g.: CPJQACML \_/10 (Pack. 10 Pcs)  
CPJQACML \_/2 (Pack. 2 Pcs)